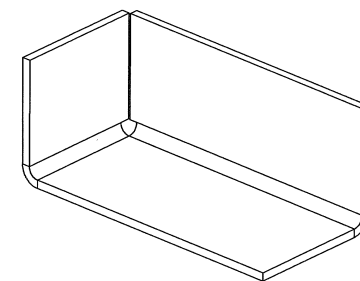
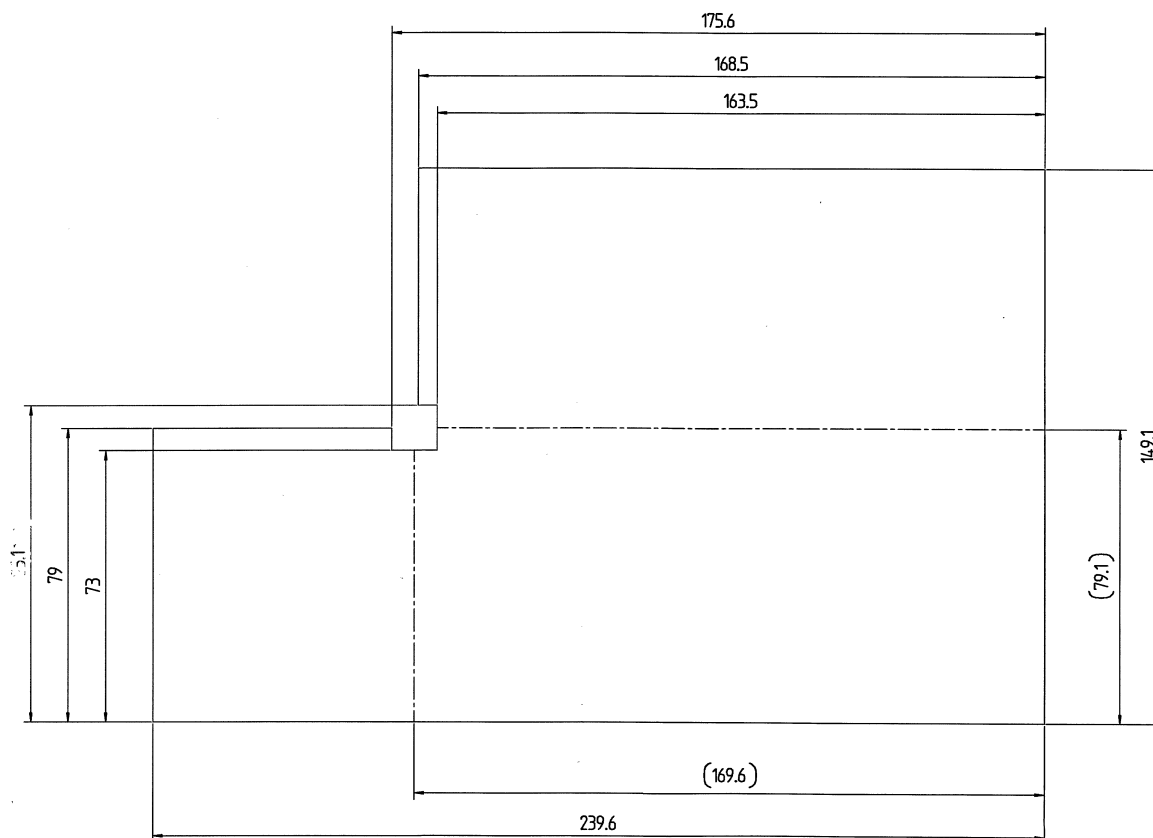
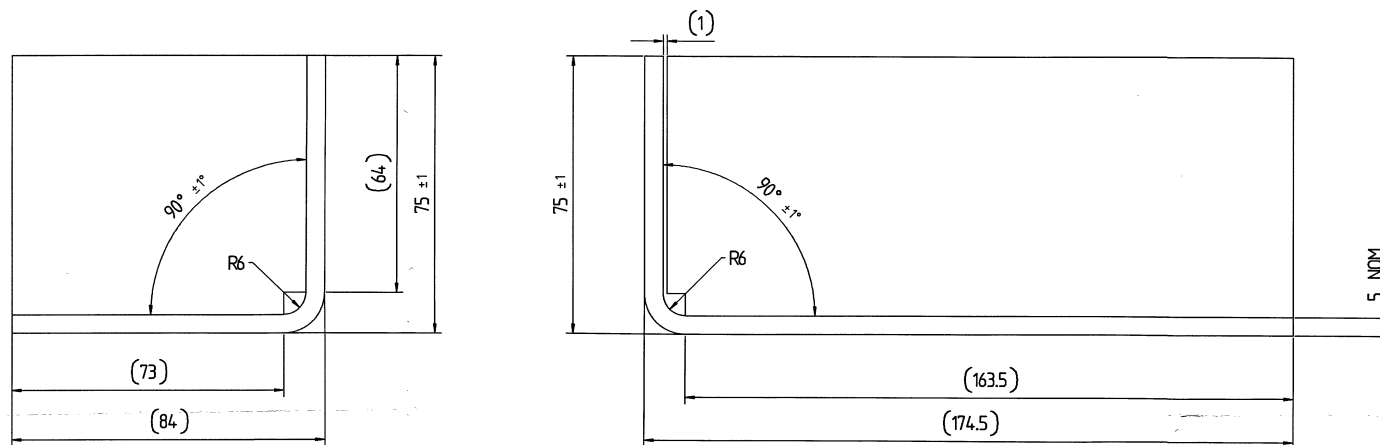


# PŘEKLAD

dn: 25.11.2016

PROVEDLIA  
JANA PROKEŠOVÁ



SNÁKORNĚNÍ  
PICTORIAL VIEW

24.11.2016

ARCHIV

STAV JODÁNI:  
DEK OTKUP  
DEK MASTNOTY

Condition at time of delivery	
de-scaled (degree of purity SA 2 1/2 acc. ISO 8501-1)	...
without burrs acc. WN 11310	X
Permissible top-end rounding during flame cutting (also positive bead acc. WN 10572)	...
oil-free / free of grease	X
oiled	...
oiling permissible	...
alternatively identify condition at time of delivery with an X	

First angle projection		01	State was RFG	STAV BIL RFG	T8834			
General tolerance (GT) in mm		Index	alteration	Change no	Fit	Toler.		
Size range	≤ 30 > 30 ≤ 120 > 120 ≤ 400 > 400 ≤ 1000	Inspection dim.						
Auxiliary dim.		Date	Name	Material:	EN 10025 S275JR	Weight:	in kg	1.2
GT coarse	L 1 2 3 4	Drawn	19.05.2016 PLMIG	Blank no:		Prod.	Scale	1:1
Lengths (L) and angle (L/Δ) ± GT	≤ 1 1 2 4 6	Checked	25.05.2016 G.Selink	Title:	cover sheet	Sheet:	1	of: 1
Tolerance Symbols ISO 1101		Auth'd	27.05.2016 W.Edmunds					
○ roundness = 1/2e-Tol.		Plcheck	01.06.2016 N.Newton-Holmes					
□ straightness/flatness = GT								
⊙ concentricity/run out = GT								
≡ symmetry = GT								
// parallelism = GT								
⊕ position = GT								
Languages:	EN	Confidential document						
		Refer to protection notice ISO 10006						
		Repl.						
		Orig.						

Released

1427133/022/001/01

A2